



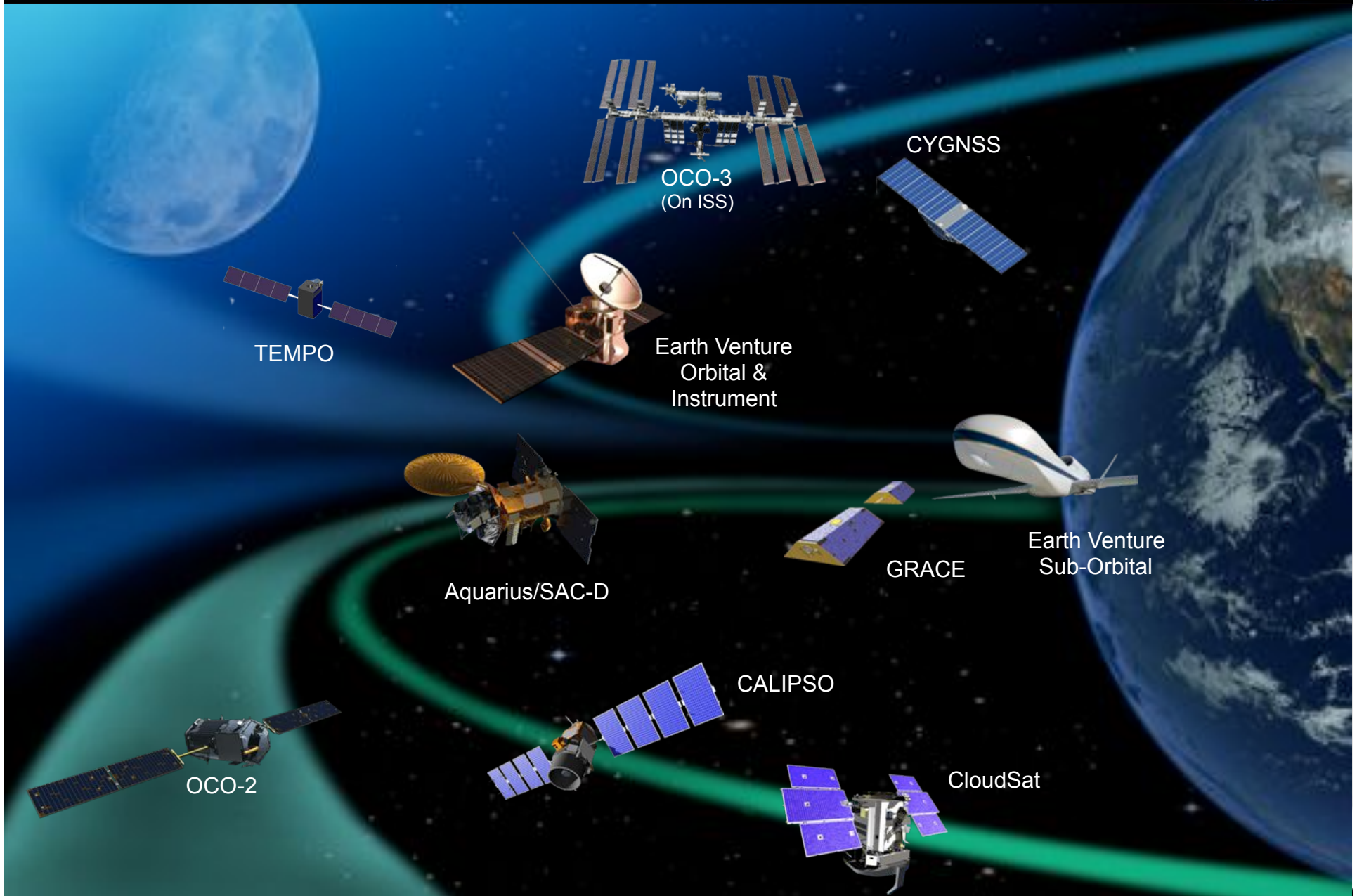
**Earth System Science Pathfinder
(ESSP)
Program Office**

Overview

Frank Peri
Program Manager



ESSP Program Portfolio



TEMPO

OCO-3
(On ISS)

CYGNSS

Earth Venture
Orbital &
Instrument

Aquarius/SAC-D

GRACE

Earth Venture
Sub-Orbital

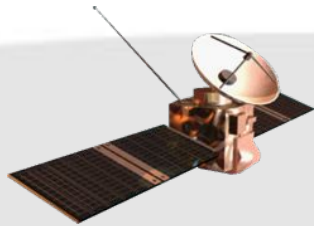
OCO-2

CALIPSO

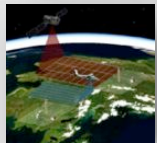
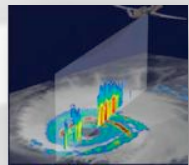
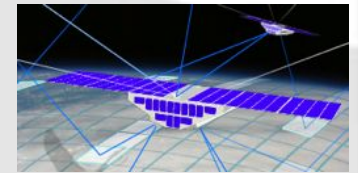
CloudSat



Earth Venture



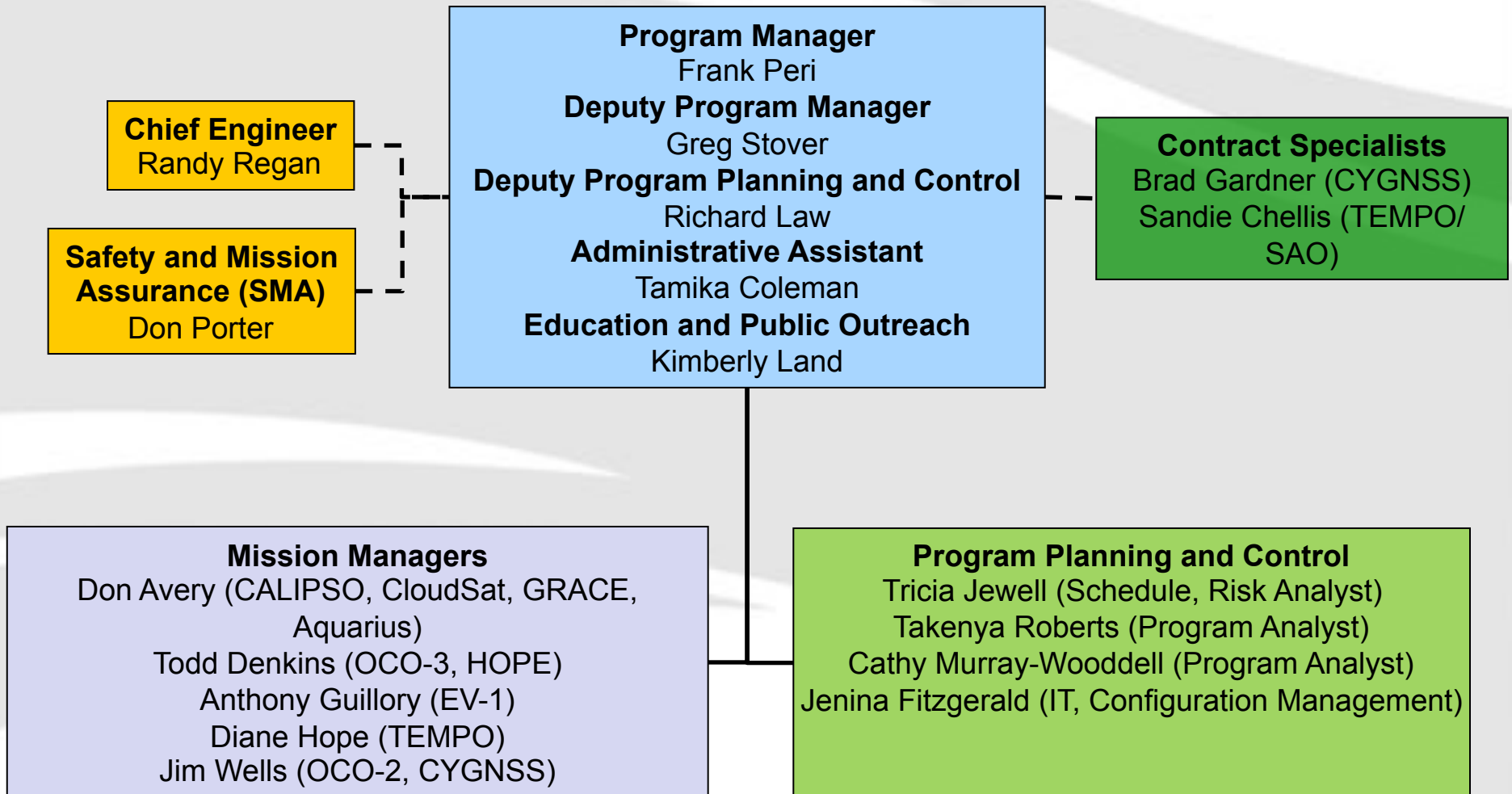
- Yearly calls as recommended by the NRC decadal survey
- AO driven, competitively selected, PI-led projects open to all earth science themes
- Mix of sub-orbital, instrument and orbital mission opportunities
- First Earth Venture (EV-1) call for airborne campaigns selected 5 investigations in spring 2010
- The second call, EV-2, for Class D spaceflight mission, selected CYGNSS in June 2012
- The third call, Earth Venture Instrument-1 (EVI-1), selected TEMPO in November 2012



“These missions should focus on fostering revolutionary innovation and on training future leaders of space-based Earth science and applications.”
Decadal Survey, 2007



Program Office Organization



-- Matrixed to ESSP

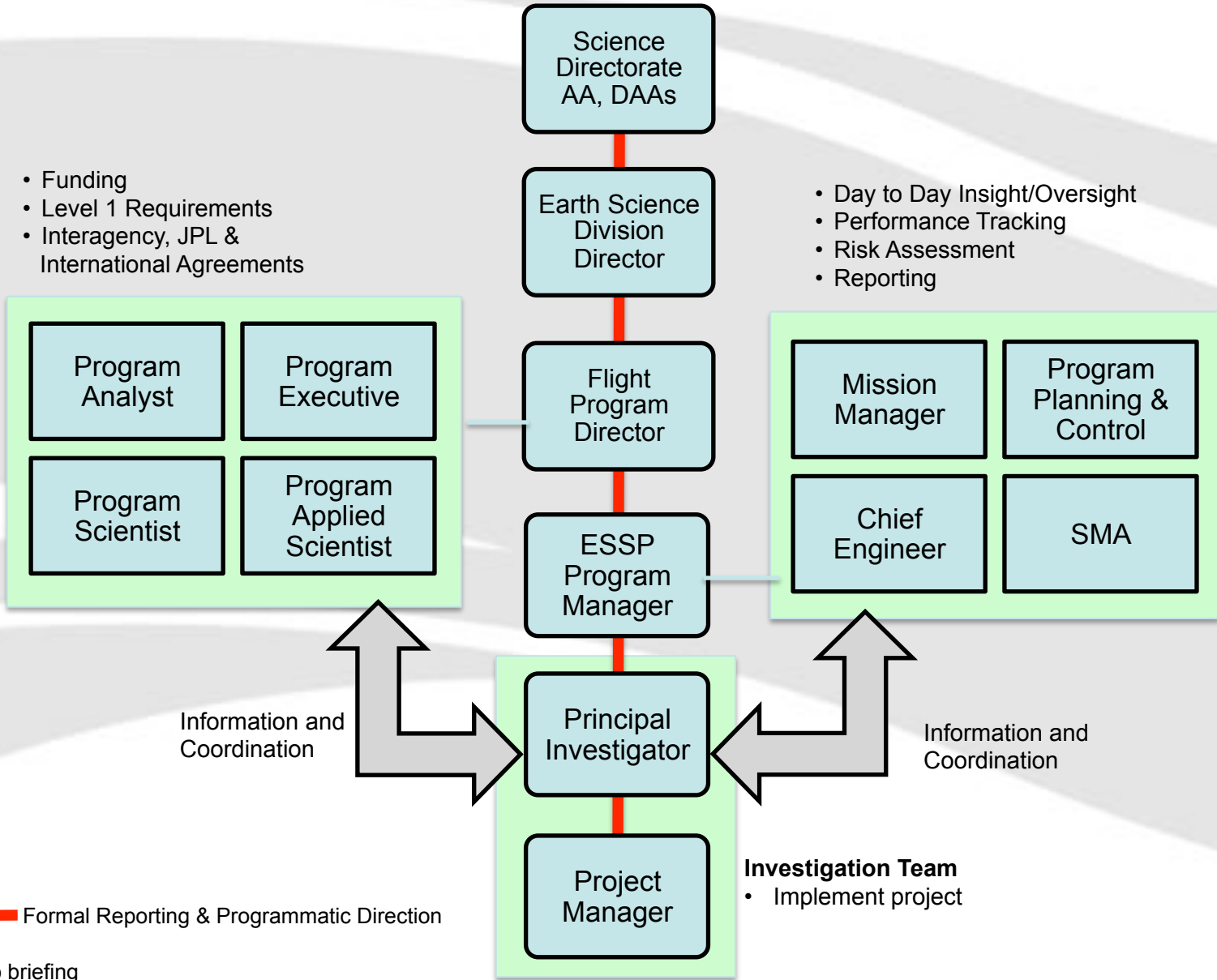


Lines of Authority and Communications



- Funding
- Level 1 Requirements
- Interagency, JPL & International Agreements

- Day to Day Insight/Oversight
- Performance Tracking
- Risk Assessment
- Reporting



— Formal Reporting & Programmatic Direction

Investigation Team
• Implement project



Principles of NASA Oversight



- Principal Investigator is wholly responsible for accomplishing the proposed instrument and science objectives
 - Technical implementation and management approach drives the risk posture and likelihood of success
 - Trade space includes elements such as performance margins, quality assurance, and reliability within committed cost and schedule
- NASA is required to perform well defined oversight to ensure project is performing to contracted standards
- Development activities meet the requirements of NPR (7120.5E or 7120.8 as appropriate), NPR 7123, etc; may use developer defined equivalent processes
- Standard NASA policy and processes are used to evaluate PI management processes